

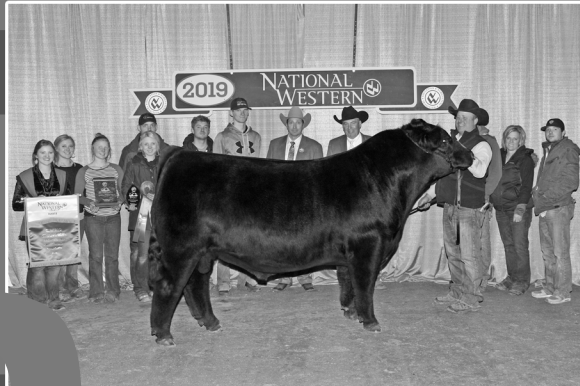
2020

# NATIONAL WESTERN

Stock Show



**HILB/SHER Data Breach**  
2019 Grand Champion and Yearling Champion Purebred Bull  
exh. by Hilbrands Cattle Company, Clarksville, TN



**Boyer 7692E**  
2019 Grand Champion and Senior Champion Percentage Bull  
exh. by Boyer Cattle and Company, Pleasantville, IL



**Mari 785E**  
2019 Grand Champion and Yearling Champion Purebred Female  
exh. by Jack Dameron, Towanda, IL



**Bramlets Beautiful E742**  
2019 Grand Champion and Senior Champion Percentage Female  
exh. by Clint Main, Seymour, IN

## PTP Bull Show:

Tuesday, January 21, 2020  
immediately following Junior Show  
in Stadium Arena

## PTP Female Show:

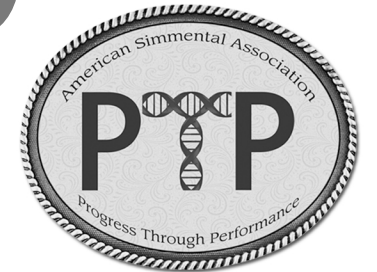
Wednesday, January 22, 2020  
10:00 a.m. in Stadium Arena

### Judge:

Charlie Boyd, Jr - Mayslick, KY

### Associate Judge:

Joe Myers - Harrodsburg, KY



ASA RING OF CHAMPIONS



Watch us live from the PTP Ring of Champions Facebook page.

2020 National Western Stock Show Purebred Simmental Bulls							Purebred Simmental EPDs & Percentile Ranks																				
							EPD Averages							10.0		68		101		5.2		56		17.4		-0.46	
Place	Tag	Exhibitor	Hometown	Animal Name	Sire	DOB	CE	%	WW	%	YW	%	MCE	%	MWW	%	Stay	%	YG	%	MB	%	\$API	%	\$TI	%	GE

**All EPDs and Percentile Ranks printed within this show program and provided to the judge(s) are current as of 1/13/20.**

**Class 101: Spring Bull Calves, Born March - June 2019**

4	6980	HICKS CATTLE COMPANY	COVINGTON, IN	H/C - W/C FAST LANE 9085G	RUBYS TURNPIKE 771E	3/30/19	10.0	55	79	15	113	25	4.4	70	56	50	15.3	85	-0.54	15	-0.11	90	115.1	80	70.6	40	
6	6657	ROCK STAR CATTLE	SYLVAN LAKE, AB	ROCK STAR COWBOY STYLE 39G	CCR COWBOY CUT 5048Z	3/23/19	10.5	45	83	5	118	15	6.1	35	61	20	19.1	25	-0.41	80	0.13	25	138.1	15	79.4	10	GE
1	6652	GARRETT BROMENSHENK TRENNEPOHL FARMS,	BILLINGS, MT	AMAZON G901	HPF TRADECRAFT D010	3/8/19	6.9	90	73	30	108	35	4.0	75	55	55	14.9	85	-0.40	85	0.18	15	122.3	55	72.6	30	GE
2	6651	PHELPS FARMS, WOLF & WELSHANS	MIDDLETOWN, IN	STCC/PFK/DOSL BEAR CLAW 9022	TJSC HAMMER TIME 35D	3/7/19	7.6	85	64	70	95	70	2.5	95	49	90	12.2	99	-0.40	85	-0.13	95	99.9	99	61.2	90	
3	6647	M/J SIMMENTAL	WOODBINE, IA	MJW CHANGE UP 952G	LLSF UPRISING Z925	3/1/19	8.7	70	76	20	115	20	5.9	40	57	45	11.1	99	-0.52	20	-0.02	65	111.3	85	72.6	30	
5	6646	KIMBALL'S FEW ACRES	SEYMOUR, WI	KFA MR HOOEY G12	GSC GCCO DEW NORTH 102C	3/1/19	12.2	25	76	20	105	40	7.5	15	56	45	17.0	60	-0.46	55	-0.15	95	118.9	70	69.2	50	

<b>Champion Spring Bull Calf</b>	6652
<b>Reserve Champion Spring Bull Calf</b>	6651

**Class 102: Junior Bull Calves, Born January - February 2019**

3	6671	WHITNEY OLSON	ALEXANDRIA, MN	GRANGER LAW 901G	HOOK'S BLACK HAWK 50B	2/23/19	17.7	1	79	15	119	15	9.7	3	64	10	18.7	30	-0.34	99	0.08	35	150.1	4	81.7	4	GE
5	6670	DIAMOND M CATTLE CO	HIAWATHA, KS	DMCC HITMAN 116G	LLSF PAYS TO BELIEVE ZU194	2/10/19	10.5	45	69	50	103	45	5.8	40	53	70	11.3	99	-0.37	95	0.01	55	111.5	85	68.2	55	GE
1	6669	SYDNEY BATY	LOVELAND, CO	BTYL DOC HOLLIDAY 202G	W/C LOADED UP 1119Y	2/5/19	9.7	55	63	75	91	75	5.1	55	53	70	15.2	85	-0.55	10	-0.07	80	110.5	90	62.7	85	
4	6667	GERDES SHOW CATTLE	WEST POINT, IA	MOORE ROCKY 7G	ACLL FORTUNE 393D	2/2/19	8.1	80	67	60	94	70	3.2	85	50	85	13.1	95	-0.45	60	-0.04	70	107.0	95	64.6	80	
2	6663	MEYER GENETICS	ONARGA, IL	PSCS PAYS TO WIN 103G ET	LLSF PAYS TO BELIEVE ZU194	1/3/19	6.7	90	71	40	100	55	2.7	90	50	85	9.3	99	-0.43	70	0.02	50	101.8	99	67.5	60	

<b>Champion Junior Bull Calf</b>	6669
<b>Reserve Champion Junior Bull Calf</b>	6663

**Class 105: Spring Yearling Bulls, Born January - April 2018**

1	6686	BUCK CREEK RANCH & FITZ GENETICS	PAWNEE, OK	FITZ GIDEON 802F	PROFIT	3/23/18	8.2	75	57	95	80	95	5.5	50	49	95	15.7	80	-0.36	95	0.18	15	120.7	60	64.6	80	GE
2	6681	JONES SHOW CATTLE	HARROD, OH	TJSC CINDERELLA MAN 221F	LLSF PAYS TO BELIEVE ZU194	3/6/18	8.5	75	61	80	86	90	3.0	90	52	80	10.4	99	-0.40	85	0.04	45	106.4	95	65.1	75	
scr	6679	B&K FARMS	PETERSBURG, TN	WHF BLANTON F365	CDI INNOVATOR 325D	3/1/18	13.1	15	83	5	121	10	7.0	25	66	5	16.9	60	-0.34	99	-0.11	90	125.3	50	75.1	20	GE
3	6677	K-LER CATTLE CO	ST CHARLES, MN	K-LER GLADIATOR 842F	W/C RELENTLESS 32C	2/14/18	10.4	45	63	75	89	85	4.4	70	51	80	15.1	85	-0.46	55	0.04	45	117.6	70	65.5	75	GE

<b>Champion Yearling Bull</b>	6686
<b>Reserve Champion Yearling Bull</b>	6663

**Class 106: Senior Yearling Bulls, Born January - December 2017**

2	6691	JONES SHOW CATTLE	HARROD, OH	TJSC KING OF DIAMONDS	LLSF PAYS TO BELIEVE ZU194	5/26/17	10.4	45	69	50	97	60	5.2	55	52	80	9.9	99	-0.38	90	0.11	30	114.0	80	70.8	40	
1	6689	ELMORE CATTLE SVCS & VOLK LIVESTOCK	WAUKOMIS, OK	JT VOLK PREMONITION 113E	BF SPECIAL CONSENSUS	2/10/17	13.8	10	63	75	92	75	7.9	15	59	30	14.0	95	-0.52	20	-0.06	80	119.5	65	67.7	60	

<b>Champion Senior Bull</b>	6689
<b>Reserve Champion Senior Bull</b>	6691

<b>GRAND CHAMPION PUREBRED BULL</b>	6669
<b>RESERVE GRAND CHAMPION PUREBRED BULL</b>	6689

Classes 103 & 104: No Entries

2020 National Western Stock Show Percentage Simmental Bulls							Percentage Simmental EPDs & Percentile Ranks																				
							EPD Averages							11.7		65		99		6.3		54		15.4		-0.23	
Place	Tag	Exhibitor	Hometown	Animal Name	Sire	DOB	CE	%	WW	%	YW	%	MCE	%	MWW	%	Stay	%	YG	%	MB	%	\$API	%	\$TI	%	GE

**Class 201: Spring Bull Calves, Born March - June 2019**

1	6837	K-LER CATTLE CO	ST CHARLES, MN	KLER PROMOTER G15	RUBYS TURNPIKE 771E	4/9/19	9.5	80	79	10	125	5	5.1	75	61	20	19.3	10	-0.41	10	0.26	60	136.5	25	77.7	15
3	6835	AVONLEA ODLING	ELKHORN, WI	O L STYLIN UNO	SILVEIRAS STYLE 9303	3/8/19	12.5	45	60	70	85	80	7.4	35	46	90	11.6	85	-0.13	85	0.49	20	128.6	40	71.1	45
2	6833	GITTLEIN CATTLE	WAUNETA, NE	BPG G.W.MCLINTOCK	TJ ROOSEVELT 366E	3/3/19	10.4	70	77	15	113	20	5.7	65	62	15	13.8	70	-0.28	40	0.33	45	127.2	45	77.2	20

<b>Champion Spring Bull Calf</b>	6837
<b>Reserve Champion Spring Bull Calf</b>	6833

**Class 202: Junior Bull Calves, Born January - February 2019**

scr	6844	K-LER CATTLE CO / HILL BROTHERS / BRENDTRO LAND & CATTLE	ST CHARLES, MN	KLER/HLL CURTAIN CALL 973G	TJ MAIN EVENT 503B	1/19/19	13.1	35	79	10	122	10	5.3	70	71	1	14.6	60	-0.30	35	0.29	50	136.7	25	82.2	5
1	6843	GERDES SHOW CATTLE	WEST POINT, IA	WCS/GSC SUPREMACY G331	MG/GSC AUTHORITY W14C	1/16/19	11.5	55	64	55	96	60	4.4	85	55	50	15.4	55	-0.29	35	0.06	90	114.2	75	64.0	75

<b>Champion Junior Bull Calf</b>	6843
<b>Reserve Champion Junior Bull Calf</b>	No Entries

**Class 203: Fall Bull Calves, Born September - December 2018**

1	6848	HICKS CATTLE COMPANY	COVINGTON, IN	H/C SOUTHBOUND 35	W/C RELENTLESS 32C	9/15/18	11.2	60	56	85	75	95	5.2	75	46	90	8.9	95	-0.19	65	0.37	35	110.4	80	64.3	75
---	------	----------------------	---------------	-------------------	--------------------	---------	------	----	----	----	----	----	-----	----	----	----	-----	----	-------	----	------	----	-------	----	------	----

<b>Champion Fall Bull Calf</b>	6848
<b>Reserve Champion Fall Bull Calf</b>	No Entries

**Class 205: Spring Yearling Bulls, Born January - April 2018**

**Subclass A**

1	6853	ELMORE CATTLE SVCS / BRAELYN BERLOWITZ / FORGY CATTLE	CUSHING, OK	RECKONING 711F	W/C RELENTLESS 32C	4/10/18	12.3	45	60	70	82	85	5.6	65	48	85	16.0	45	-0.33	25	0.13	80	115.2	70	61.3	85
2	6852	BENTLEY McCULLOUGH	FORT BENTON, MT	TSR KING OF SPADES 832F	WLE UNO MAS X549	3/10/18	13.2	35	50	95	68	99	7.1	40	44	95	8.0	99	-0.15	80	0.48	20	120.0	60	67.1	65

**Subclass B**

1	6850	HOFFMAN RANCH	THEDFORD, NE	WHEATLAND RINGLEADER 834F	PROFIT	1/27/18	6.8	95	61	70	86	75	1.6	99	58	30	12.6	80	-0.33	25	0.08	90	97.4	95	58.6	95
2	6849	HICKS CATTLE COMPANY & BUCK CREEK RANCH	COVINGTON, IN	B C R PERFECT VISION	MR CCF 20-20	1/13/18	8.0	90	72	25	107	35	3.6	90	53	65	12.5	80	-0.46	4	0.23	65	114.5	75	71.2	45

<b>Champion Yearling Bull</b>	6853
<b>Reserve Champion Yearling Bull</b>	6850

<b>GRAND CHAMPION PERCENTAGE BULL</b>	6853
<b>RESERVE GRAND CHAMPION PERCENTAGE BULL</b>	6850

Classes 204 & 206: No Entries

**NEW IN THE 2019-2020 PTP SHOW SEASON**

# EXHIBITORS' CHOICE AWARD

**Open show exhibitors at the four major shows are invited to vote for the bull and/or female of their choice.**

*Ballots will be available at American Royal, NAILE, National Western Stock Show and Fort Worth Stock Show.*

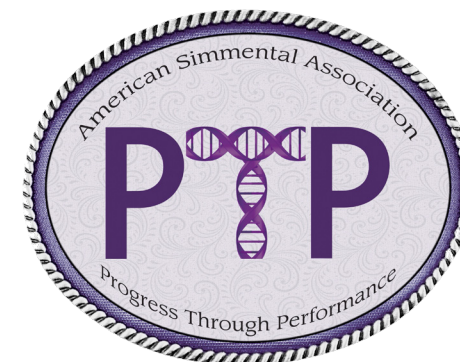
**Animals receiving votes must be exhibited in the Open Show at which they receive votes.**

**The bull and female receiving the most cumulative votes at the conclusion of the show season will be recognized as the inaugural EXHIBITORS' CHOICE AWARD winners.**

LIMIT: ONE BALLOT PER EXHIBITOR PER SHOW ENTERED.

BALLOTS MAY BE TURNED IN AT THE OFFICIAL ASA BOOTH.

VOTING CLOSES 30 MINUTES AFTER THE LAST OPEN SHOW CHAMPION IS SELECTED.



 **SimGenetics**  
PROFIT THROUGH SCIENCE  
American Simmental Association

2020 National Western Stock Show Purebred Simmental Heifers							Purebred Simmental EPDs & Percentile Ranks																					
Place	Tag	Exhibitor	Hometown	Animal Name	Sire	DOB	EPD Averages																					
							10.0	%	68	%	101	%	5.2	%	56	%	17.4	%	-0.46	%	0.01	%	123.8	%	68.9	%	GE	

All EPDs and Percentile Ranks printed within this show program and provided to the judge(s) are current as of 1/13/20.

**Class 401: Spring Heifer Calves, Born March - June 2019**

**Subclass A**

scr	6744	B&K FARMS	PETERSBURG, TN	B&K DASH OF FAME 137G	CDI INNOVATOR 325D	5/28/19	10.9	40	82	10	119	10	5.4	50	64	10	17.1	60	-0.33	99	0.26	10	143.1	10	83.1	3
4	6743	HAYDEN MULLION	BLYTHE, CA	EMMA	ROCKING P LEGENDARY C918	5/20/19	8.7	70	71	35	108	35	2.8	90	51	80	12.0	99	-0.34	99	-0.05	75	107.3	95	66.9	65
3	6742	TRENNEPOHL FARMS & JAXON HILBRANDS	MIDDLETOWN, IN	STCC GLASS SLIPPER 9098	STCC PAY UP 6147	5/10/19	10.2	50	63	75	88	85	4.7	65	48	95	10.2	99	-0.41	80	-0.07	80	100.8	99	61.9	90
6	6741	HOFFMAN RANCH	THEDFORD, NE	JPV RJ W/C DERBY GIRL 9209G ET	W/C RELENTLESS 32C	5/9/19	10.4	45	63	75	84	90	3.2	85	53	70	14.8	85	-0.56	10	0.10	30	120.7	60	68.0	60
7	6738	KALE ROBISON	CUSHING, OK	HSC SSTF EXTRAVAGANT 225G	KCC1 EXCLUSIVE 116E	5/5/19	11.8	30	70	40	105	40	6.8	25	52	75	16.0	75	-0.49	40	0.01	55	126.1	45	71.1	40
8	6737	NEXT GENERATION FARMS	PONTIAC, IL	NXT HIGH HOPES G912	W/C RELENTLESS 32C	5/3/19	8.7	70	65	65	86	90	2.6	90	47	99	11.7	99	-0.47	50	0.01	55	106.1	95	64.5	80
2	6734	MADELLYN BEINS	DEWEYVILLE, UT	TPHT RUMBA G450A	DMCC ELIJAH 48E	5/2/19	8.9	70	62	80	92	75	5.2	55	49	95	14.0	95	-0.43	70	0.01	55	112.5	85	64.0	80
9	6733	FERGUSON SHOW CATTLE	MENTOR, OH	FSCI ROYALY LOADED G926	W/C LOADED UP 1119Y	5/2/19	9.9	55	62	80	92	75	6.0	40	51	85	16.3	70	-0.41	80	0.08	35	122.5	55	66.2	70
5	6732	DELANEY CHESTER	OREGONIA, OH	FSCI GIESHA G911	W/C EXECUTIVE ORDER 8543B	5/1/19	13.0	15	69	45	105	40	6.1	35	59	30	10.0	99	-0.39	90	0.08	35	122.1	60	75.1	20
1	6731	BUCK CREEK RANCH & CHARLEE GIBSON	PAWNEE, OK	B C R TIME TO SHINE 105G	SC PAY THE PRICE C11	5/1/19	11.3	35	68	55	97	65	5.5	50	52	80	10.2	99	-0.43	70	0.15	20	118.1	70	71.6	35

**Subclass B**

2	6729	TRENNEPOHL FARMS & CLAIRE TRENNEPOHL	MIDDLETOWN, IN	STCC/PSC MS SWEET LILY G51	TJSC HAMMER TIME 35D	4/27/19	12.4	20	63	75	89	85	5.2	55	50	85	12.4	99	-0.44	65	-0.03	70	113.3	85	65.4	75	
scr	6978	GRACE ERICKSON	BOLIVAR, MO	TESF DOGWOOD G45	HOOK'S BLACK HAWK 50B	4/23/19	11.0	40	73	30	109	30	6.5	30	54	65	13.4	95	-0.34	99	0.13	25	129.2	35	76.5	15	GE
scr	6727	HICKS CATTLE COMPANY	COVINGTON, IN	H/C MISS VICTORIA 396G	W/C DOUBLE DOWN 5014E	4/22/19	11.2	35	69	45	95	70	4.0	75	56	50	12.5	99	-0.49	40	0.09	30	119.2	65	71.4	40	GE
3	6726	WYATT DeBERRY	OLTON, TX	FLITSCH MS RELENTLESS 4F	W/C RELENTLESS 32C	4/20/19	9.3	65	63	75	83	95	4.2	70	49	95	14.9	85	-0.38	90	0.14	20	119.1	65	66.4	70	GE
1	6708	SARA SULLIVAN	DUNLAP, IA	AMERICA	W/C BANKROLL 811D	4/20/19	10.8	40	67	60	97	65	4.0	75	55	60	14.9	85	-0.52	20	0.11	30	125.8	45	71.5	35	GE
scr	6719	B&K FARMS	PETERSBURG, TN	B&K/IVS TURN TO LOVE 337G	RUBYS TURNPIKE 771E	4/10/19	10.0	55	83	5	125	5	5.8	40	62	15	14.4	90	-0.49	40	0.09	30	127.0	45	78.8	10	GE
5	6718	M/R LIVESTOCK	AMHERST, SD	M/RS PHOEBE 19G	WLE UNO MAS X549	4/9/19	11.5	30	60	90	81	95	5.4	50	48	95	11.6	99	-0.47	50	0.18	15	121.5	60	69.2	50	GE
scr	6716	JS SIMMENTAL	MAXWELL, IA	CCS/JS SUMMER 40G	W/C DOUBLE DOWN 5014E	4/8/19	11.9	25	73	30	106	40	4.8	60	57	45	12.3	99	-0.48	45	-0.11	90	113.6	80	70.4	45	GE
4	6713	MAKALA PAALMAN	APPLETON, WI	KFA MISS MIA G439	TL BOTTOMLINE	4/5/19	9.6	60	70	45	103	45	5.0	55	52	80	12.1	99	-0.31	99	0.03	50	111.2	85	67.5	60	GE
scr	6711	4/B LAND & CATTLE	SIOUX CITY, IA	4/B MISS BANKROLL 307G	W/C BANKROLL 811D	4/4/19	13.4	15	75	20	109	30	6.1	35	58	35	16.9	60	-0.53	20	0.03	50	132.0	30	74.7	20	GE

							EPD Averages																				
Place	Tag	Exhibitor	Hometown	Animal Name	Sire	DOB	CE	%	WW	%	YW	%	MCE	%	MWW	%	Stay	%	YG	%	MB	%	\$API	%	\$TI	%	GE

**Subclass C**

scr	6709	4/B LAND & CATTLE	SIOUX CITY, IA	4/B MISS BANKROLL 295G	W/C BANKROLL 811D	3/30/19	13.4	15	75	20	109	30	6.1	35	58	35	16.9	60	-0.53	20	0.03	50	132.0	30	74.7	20
scr	6658	KIMBALL'S FEW ACRES	SEYMOUR, WI	KFA MISS ROSIE 121G	MAF KING COBRA 3C	3/27/19	6.7	90	81	10	113	20	4.3	70	60	25	18.7	30	-0.44	65	-0.16	95	111.2	85	67.5	60
scr	6707	4/B LAND & CATTLE	SIOUX CITY, IA	4/B MISS RELENTLESS 231G	W/C RELENTLESS 32C	3/18/19	11.7	30	60	85	77	99	5.0	55	46	99	11.7	99	-0.40	85	0.11	30	114.6	80	65.2	75
6	6706	MEGAN BROWN	ROANOKE, AL	GSC SCARLET 960G	W/C RELENTLESS 32C	3/16/19	11.0	40	68	50	88	85	5.2	55	51	80	15.5	80	-0.44	65	0.07	35	121.6	60	68.7	55
scr	6703	JORDAN STEPHENS	EWING, KY	S B C SHEZ A LADY 116G	CDI INNOVATOR 325D	3/10/19	12.2	25	83	5	125	10	5.8	40	61	20	14.7	90	-0.37	95	0.19	15	139.2	15	83.5	2
scr	6702	JS SIMMENTAL	MAXWELL, IA	BTYL SWEET NOTHINGS 209G	W/C RELENTLESS 32C	3/10/19	7.2	85	61	80	84	90	2.4	95	49	90	10.9	99	-0.48	45	0.04	45	100.5	99	61.4	90
5	6700	MORGAN JACKSON	KAUFMAN, TX	B C R TIME TO SHINE 085G	HPF QUANTUM LEAP Z952	3/9/19	13.3	15	69	50	95	70	6.4	30	54	65	12.5	99	-0.44	65	0.14	20	126.0	45	73.3	30
4	6699	TRENNEPOHL FARMS & CAMRYN CLAPP	MIDDLETOWN, IN	STCC/PSC LILA'S HAMMER G34	TJSC HAMMER TIME 35D	3/9/19	12.4	20	63	75	89	85	5.2	55	50	85	12.4	99	-0.44	65	-0.03	70	113.3	85	65.4	75
scr	6698	PUETT'S SIMMENTAL RANCH	MANHATTAN, KS	PUETTS MS BURNING UP	LLSF UPRISING Z925	3/6/19	9.1	65	74	25	117	15	5.9	40	59	30	12.3	99	-0.49	40	-0.11	90	107.5	95	68.4	55
1	6696	SYDNEY BATY	LOVELAND, CO	BTYL PRADA 204G	W/C LOADED UP 1119Y	3/5/19	9.7	55	63	75	91	75	5.1	55	53	70	15.2	85	-0.55	10	-0.07	80	110.5	90	62.7	85
3	6695	4/B LAND & CATTLE	SIOUX CITY, IA	4/B MISS RELENTLESS 217G	W/C RELENTLESS 32C	3/5/19	11.7	30	60	85	77	99	5.0	55	46	99	11.7	99	-0.40	85	0.11	30	114.6	80	65.2	75
scr	6694	BIG BEAR CATTLE CO	STERLING, KS	LEF MISS KAY 1964	TLLC ONE EYED JACK	3/3/19	8.9	70	60	85	88	85	3.0	90	49	90	13.3	95	-0.46	55	-0.01	60	108.1	90	61.7	90
2	6693	TRENNEPOHL FARMS & CLAIRE TRENNEPOHL	MIDDLETOWN, IN	PSCS ALLEY'S LADY 303G ET	HARA'S DISTINCTION 10C	3/3/19	9.0	65	67	60	98	60	4.7	65	51	85	12.5	99	-0.47	50	-0.03	70	110.6	90	66.8	65

<b>Champion Spring Heifer Calf</b>	6708
<b>Reserve Champion Spring Heifer Calf</b>	6696

**Class 402: Junior Heifer Calves, Born January - February 2019**

**Subclass A**

1	6775	SAMANTHA VANVORHIS	BOWLING GREEN, OH	TJSC SO SWEET 56G	W/C RELENTLESS 32C	2/28/19	10.1	50	62	80	81	95	4.8	60	47	99	12.2	99	-0.46	55	0.08	35	112.8	85	65.4	75
scr	6774	PEYTON PUCKETT	JEFFERSON, GA	RBS DIAMOND'S LADY 940G	W/C BANKROLL 811D	2/27/19	10.2	50	62	80	86	90	5.8	40	52	75	19.1	25	-0.39	90	0.09	30	130.3	35	68.0	60
scr	6772	WAYWARD HILL FARM	VERSAILLES, KY	WHF GYPSY 900G	CDI INNOVATOR 325D	2/26/19	7.2	85	89	2	136	2	3.6	80	66	5	15.9	75	-0.44	65	-0.02	65	124.2	50	79.9	10
4	6982	MEGAN NIESLANIK	CARBONDALE, CO	HR/PCC MISS TRIXY 8010G	WLE UNO MAS X549	2/25/19	11.4	35	56	95	75	99	4.0	75	49	95	9.6	99	-0.39	90	0.20	15	117.4	70	68.1	60
2	6841	ELMORE CATTLE SVCS & JACQUE JOHNSON	WAUKOMIS, OK	CLAC BLACK JADE 269G	W/C LOADED UP 1119Y	2/16/19	11.3	35	60	85	82	95	6.4	30	52	75	18.4	35	-0.54	15	0.01	55	124.5	50	65.0	75
3	6762	BRADY MIDCAP	WRAY, CO	WRS GROOVY LOVE G936	W/C LOADED UP 1119Y	2/11/19	13.3	15	62	80	87	85	7.3	20	49	95	14.0	95	-0.47	50	-0.08	85	114.4	80	63.6	85
scr	6760	MADISON MULLION	BLYTHE, CA	4LS RELENTLESS MISS	W/C RELENTLESS 32C	2/3/19	8.9	70	61	80	83	95	3.3	85	50	85	15.8	75	-0.35	95	0.14	20	120.5	65	65.9	70

**Subclass B**

scr	6666	KEANNA SMITH	IGNACIO, CO	MISS ECS CADILLAC GIRL 921G	CMFM CROSSROADS 224C	1/28/19	12.9	15	54	99	74	99	7.2	20	50	90	15.4	80	-0.38	90	-0.04	70	116.6	75	60.8	95
1	6753	JOSIE PHILLIPS & CIRCLE M FARMS	MAYSVILLE, KY	B C R TIME TO SHINE 012G	HPF QUANTUM LEAP Z952	1/20/19	13.3	15	69	50	95	70	6.4	30	54	65	12.5	99	-0.44	65	0.14	20	126.0	45	73.3	30
2	6752	NEXT GENERATION FARMS	PONTIAC, IL	CLAC BLACK SATIN 179G	LLSF PAYS TO BELIEVE ZU194	1/14/19	7.2	85	67	60	96	65	3.2	85	51	85	8.9	99	-0.46	55	-0.02	65	97.6	99	64.1	80
scr	6749	ARIBELLA BEINS	DEWEYVILLE, UT	DAF SUMMER G07	MR TR HAMMER 308A ET	1/3/19	9.1	65	77	20	117	15	2.2	95	58	35	13.5	95	-0.44	65	0.03	50	119.5	65	74.0	25
4	6748	J BAR T CATTLE	JUNIATA, NE	WS MS PINNACLE G11	W/C PINNACLE E80	1/2/19	11.7	30	60	85	84	90	5.6	45	52	75	17.4	55	-0.46	55	0.01	55	123.2	55	64.9	75
3	6747	JUSTIN THOMFORDE	GOODHUE, MN	PEINE/GS BERTHA 903G	W/C RELENTLESS 32C	1/2/19	8.7	70	62	80	85	90	4.0	75	47	99	15.2	85	-0.46	55	0.04	45	113.6	80	63.4	85

<b>Champion Junior Heifer Calf</b>	6753
<b>Reserve Champion Junior Heifer Calf</b>	6775

							EPD Averages							10.0		68		101		5.2		56		17.4		-0.46		0.01		123.8		68.9		
Place	Tag	Exhibitor	Hometown	Animal Name	Sire	DOB	CE	%	WW	%	YW	%	MCE	%	MWW	%	Stay	%	YG	%	MB	%	\$API	%	\$TI	%	GE							

**Class 403: Fall Heifer Calves, Born September - December 2018**

**Subclass A**

3	6790	M/J SIMMENTAL	WOODBINE, IA	MJW PAYZLEE 820F	LLSF PAYS TO BELIEVE ZU194	12/25/18	8.6	70	71	40	104	45	5.4	50	53	65	10.3	99	-0.41	80	0.04	45	110.3	90	70.3	45	
2	6942	SARA SULLIVAN	DUNLAP, IA	S/P TRUE LOVE F789	W/C EXECUTIVE ORDER 8543B	12/15/18	11.5	30	74	25	113	25	3.7	80	60	25	9.8	99	-0.39	90	0.12	25	122.1	60	77.2	15	
scr	6787	TANNER CURTIN	OXFORD, IA	W/C ANGEL 81F	W/C RELENTLESS 32C	11/8/18	12.6	20	64	70	87	85	4.9	60	52	75	14.7	90	-0.53	20	0.07	35	123.0	55	68.3	55	
scr	6979	GRACE ERICKSON	BOLIVAR, MO	TESF DIXIE QUEEN	HILB ORACLE C033R	11/3/18	9.6	60	67	55	92	75	4.9	60	55	60	15.9	75	-0.51	25	0.16	20	127.7	40	72.0	35	GE
4	6791	REED & RILEY STRINGER	TRENTON, TX	WOOD MISS FULLY LOADED 8097F	DMCC/WOOD FULLY LOADED 39D	11/3/18	10.8	40	61	85	89	80	4.9	60	49	90	14.7	90	-0.51	25	-0.08	85	112.1	85	62.5	90	
1	6786	JS SIMMENTAL	MAXWELL, IA	WHF ANDIE 369F	CDI INNOVATOR 325D	11/2/18	12.1	25	81	10	119	15	6.3	35	65	10	16.4	70	-0.38	90	0.11	30	135.7	20	80.1	10	

**Subclass B**

4	6784	TRIPLE D CATTLE CO	HOLSTEIN, NE	HILB/JASS HIGHER LOVE 652F	CDI INNOVATOR 325D	10/24/18	12.2	25	77	15	109	30	6.5	30	61	20	15.2	85	-0.42	75	0.19	15	135.9	20	79.6	10	
scr	6782	TYLER DIFFEY	LEXINGTON, MS	HLVW CLASSY SHINE 1890	TKCC CLASSIFIED	10/16/18	9.5	60	68	55	99	55	4.3	70	55	55	15.2	85	-0.48	45	-0.01	60	117.3	75	67.8	60	
scr	6779	WAYWARD HILL FARM	VERSAILLES, KY	WHF SIERRA 81F	CDI INNOVATOR 325D	9/30/18	14.7	10	74	30	104	45	8.5	10	56	55	16.6	65	-0.50	30	0.12	25	140.2	15	78.1	10	GE
2	6778	MACKENZIE NEAL	W ALEXANDRIA, OH	JSUL PROUD MARRY 8380F	PROFIT	9/8/18	6.2	95	56	95	80	95	1.8	95	52	80	13.8	95	-0.42	75	-0.01	60	103.8	95	59.4	95	
3	6777	REED & RILEY STRINGER	TRENTON, TX	SJW YOLANDA 884F	W/C RELENTLESS 32C	9/6/18	10.4	45	61	85	81	95	5.1	55	52	75	13.7	95	-0.37	95	0.03	50	112.1	85	63.5	85	
1	6776	JS SIMMENTAL	MAXWELL, IA	WHF GUCCI 366F	CCR WIDE RANGE 9005A	9/2/18	11.5	30	75	25	113	25	6.0	40	55	55	15.4	80	-0.46	55	-0.15	95	117.1	75	69.5	50	

<b>Champion Fall Heifer Calf</b>	<u>6786</u>
<b>Reserve Champion Fall Heifer Calf</b>	<u>6942</u>

							EPD Averages										10.0		68		101		5.2		56		17.4		-0.46		0.01		123.8		68.9		
Place	Tag	Exhibitor	Hometown	Animal Name	Sire	DOB	CE	%	WW	%	YW	%	MCE	%	MWW	%	Stay	%	YG	%	MB	%	\$API	%	\$TI	%	GE										

**Class 405: Spring Yearling Heifers, Born January - April 2018**

**Subclass A**

2	6827	MADILYN NORVELL	TUTTLE, OK	CONLEY SHEZA STAR F912	TL LEDGER	4/12/18	9.7	55	66	60	97	60	4.4	70	53	70	14.8	85	-0.38	90	0.16	20	125.0	50	70.7	40	
5	6826	JS SIMMENTAL	MAXWELL, IA	CCS/WHF SUMMER 50F	CDI INNOVATOR 325D	4/10/18	12.1	25	83	4	126	4	6.3	35	69	2	17.1	60	-0.45	60	0.16	20	142.3	10	83.8	2	GE
scr	6825	SCHAAKE FARMS	WESTMORELAND, KS	SFI MISS SIZZLE F03B	CCLT ALLIANCE 91C	4/9/18	10.5	45	62	80	81	95	6.7	25	48	95	14.5	90	-0.52	20	-0.05	75	111.7	85	62.9	85	
3	6821	TUCKER BAYER	RINGLE, WI	J6C WEIS MISS COCO 16F	W/C RELENTLESS 32C	4/4/18	9.7	55	61	85	79	99	4.0	75	50	90	13.4	95	-0.40	85	0.09	30	113.4	80	64.4	80	
4	6820	SYDNEY BATY	LOVELAND, CO	GCC RIOSOFMERCEDES 8243F	W/C LOADED UP 1119Y	4/3/18	9.7	55	63	75	91	75	5.1	55	53	70	15.2	85	-0.55	10	-0.07	80	110.5	90	62.7	85	
scr	6815	TRENNEPOHL FARMS & CLAIRE TRENNEPOHL	MIDDLETOWN, IN	TJSC DIAMOND 215F	LLSF PAYS TO BELIEVE ZU194	3/24/18	10.4	45	67	55	95	70	5.2	55	51	85	10.6	99	-0.38	90	0.11	30	115.1	80	70.1	45	
6	6814	MAKALA PAALMAN	APPLETON, WI	KFA MISS EMERY ZF15	MAF KING COBRA 3C	3/20/18	7.7	80	77	15	107	35	4.5	65	59	30	18.0	45	-0.44	65	-0.15	95	112.1	85	67.0	65	
1	6812	HOFFMAN RANCH	THEDFORD, NE	JPV MISS ROSE 34F ET	W/C RELENTLESS 32C	3/11/18	13.8	10	62	80	79	95	6.0	40	56	50	16.7	65	-0.43	70	0.06	40	123.3	55	65.2	75	GE

**Subclass B**

1	6810	HEFFNER CATTLE & CHAEL ROBERTS	ABSAROCKE, MT	DMCC FRANCESCA 58F	LLSF PAYS TO BELIEVE ZU194	3/7/18	7.4	85	70	45	102	50	3.6	80	53	70	9.5	99	-0.34	99	0.10	30	107.6	95	69.4	50	
4	6806	KIMBALL'S FEW ACRES	SEYMOUR, WI	LSCC/KFA MISS COOKIE F800	MAF KING COBRA 3C	3/3/18	9.3	65	76	20	112	25	5.7	45	59	30	16.7	65	-0.43	70	-0.19	99	109.9	90	65.8	70	
6	6805	MEGAN BROWN	ROANOKE, AL	GSC BLACK CAP 336F	MG/GSC AUTHORITY W14C	3/3/18	9.8	55	62	80	92	75	4.3	70	54	65	13.5	95	-0.32	99	0.09	30	118.4	70	67.2	65	
2	6803	MIRANDA RAITHEL	FALLS CITY, NE	EC COUNTESS 286F	PROFIT	2/21/18	5.9	95	68	55	95	70	2.5	95	53	65	11.9	99	-0.41	80	-0.01	60	102.5	99	64.8	75	
7	6802	KIMBALL'S FEW ACRES	SEYMOUR, WI	KFA MISS HAZEL F12	TL BOTTOMLINE	2/20/18	10.0	55	71	40	100	55	6.9	25	55	60	15.3	85	-0.40	85	-0.08	85	111.4	85	65.4	75	
5	6800	HENNESSY SHOW CATTLE	DES LACS, ND	W/C ANGEL 8598F	CDI INNOVATOR 325D	2/18/18	14.6	10	77	20	113	20	6.8	25	62	20	16.5	70	-0.43	70	0.23	10	147.3	5	82.9	3	GE
3	6798	SADIE ROBISON	CUSHING, OK	JBSF HELLO 1F	LLSF PAYS TO BELIEVE ZU194	2/7/18	9.0	65	61	85	86	90	5.0	55	50	90	12.0	99	-0.46	55	0.01	55	108.1	90	63.9	80	
scr	6797	BRYCE LEEFERS	EDGERTON, MO	SFI IM A FLIRT F16	LLSF PAYS TO BELIEVE ZU194	2/3/18	11.8	30	64	75	95	70	5.9	40	50	85	8.4	99	-0.32	99	0.17	20	115.3	80	70.0	45	

**Champion Yearling Heifer** 6812  
**Reserve Champion Yearling Heifer** 6810

**GRAND CHAMPION PUREBRED HEIFER** 6812  
**RESERVE GRAND CHAMPION PUREBRED HEIFER** 6708

*Class 404 & 406: No Entries*



2020 National Western Stock Show Percentage Simmental Heifers							Percentage Simmental EPDs & Percentile Ranks																				
							EPD Averages		11.7		65		99		6.3		54		15.4		-0.23		0.28		123.8		69.2
Place	Tag	Exhibitor	Hometown	Animal Name	Sire	DOB	CE	%	WW	%	YW	%	MCE	%	MWW	%	Stay	%	YG	%	MB	%	\$API	%	\$TI	%	GE

**Class 501: Spring Heifer Calves, Born March - June 2019**

**Subclass A**

scr	6892	AUSTIN REITZENSTEIN	KERSEY, CO	FGL GYPSY LADY 617G	SC PAY THE PRICE C11	6/17/19	10.6	70	61	65	88	75	3.5	90	51	70	8.5	99	-0.35	20	0.08	90	97.9	95	62.0	85
1	6891	JORDAN STEPHENS	EWING, KY	S B C ENCHANTING 726G	MR CCF 20-20	5/20/19	12.1	50	69	35	107	35	6.6	50	57	35	9.3	95	-0.30	35	0.21	70	111.1	80	69.4	50
2	6889	HICKS CATTLE COMPANY	COVINGTON, IN	H/C MISS VICTORIA 9229G	PVF BLACKLIST 7077	5/3/19	9.8	75	84	3	124	10	3.6	90	60	20	10.4	90	-0.20	65	0.29	50	110.7	80	75.2	25

**Subclass B**

3	6886	FERGUSON SHOW CATTLE	MENTOR, OH	MISS CGW VOLTAGE G292	SS/PRS HIGH VOLTAGE 244X	4/18/19	13.6	30	62	60	84	80	7.2	35	48	80	7.2	99	-0.15	80	0.34	40	113.2	75	69.0	55
6	6884	KELSEY KUEHNI	BOYD, WI	BLAZE	FLL ON THE BANDWAGON	4/15/19	8.3	90	57	80	82	85	4.0	85	46	90	8.6	99	-0.18	70	0.34	40	105.3	90	63.7	75
1	6981	REED HANES	CELINA, OH	S&S AMERICAN HONEY 973G	SILVEIRAS STYLE 9303	4/13/19	7.3	95	53	90	80	90	3.5	90	42	99	14.5	65	-0.17	75	0.29	50	112.4	75	60.0	90
2	6882	SYDNEY BATY	LOVELAND, CO	BTYL NOCONA 215G	GSC GCCO DEW NORTH 102C	4/11/19	12.9	40	71	30	101	45	7.5	30	52	65	11.5	85	-0.31	30	0.00	95	105.6	90	65.6	70
scr	6880	LOGAN MULLION	BLYTHE, CA	B C R ZENYATIA 094G	HPF QUANTUM LEAP Z952	4/10/19	9.3	80	70	35	101	50	4.4	85	55	50	12.2	80	-0.34	25	0.06	90	103.5	90	64.8	75
5	6855	ARIBELLA BEINS	DEWEYVILLE, UT	TPHT HADEE G016	DMCC ELIJAH 48E	4/7/19	8.4	90	63	55	91	70	4.1	85	50	75	11.4	85	-0.28	40	0.12	85	100.3	95	61.5	85
4	6854	BLAKE FABRIZIUS	CARR, CO	KLER DOLLY'S PROFIT G24	PROFIT	4/6/19	7.4	95	70	35	105	40	3.2	95	59	30	18.0	25	-0.34	25	0.23	65	122.5	55	69.2	55
scr	2151	LOGAN LAKIN	SARCOXIE, MO	ACW MISS 9312G	B-C IRONHIDE 6212D	4/2/19	12.4	45	59	75	86	80	5.9	60	50	75	12.5	80	-0.29	35	0.11	85	110.9	80	62.7	80

**Subclass C**

1	6876	AUBREY NEAL	OSGOOD, IN	S&S MY GIRL TAYLOR 990G	SILVEIRAS STYLE 9303	3/29/19	7.3	95	53	90	80	90	3.5	90	42	99	14.5	65	-0.17	75	0.29	50	112.4	75	60.0	90
scr	6875	CASEY MIDCAP	WRAY, CO	MKBC LOADED LASSIE G928	W/C LOADED UP 1119Y	3/28/19	11.9	50	56	85	83	85	7.0	40	49	80	14.1	65	-0.21	60	0.35	40	124.3	50	66.3	65
5	6874	TY HERCHENHAHN	PETAL, MS	FLYING B MADEA	FLYING B MONDO 430B	3/28/19	9.8	75	57	80	85	80	5.8	65	48	85	10.2	95	-0.31	30	0.17	75	102.2	90	60.4	90
3	6873	BLAKE FABRIZIUS	CARR, CO	KLER DOLLYS ESSENCE G23	W/C BANKROLL 811D	3/28/19	12.6	40	71	30	108	30	6.1	55	61	15	19.3	10	-0.40	10	0.23	65	137.3	25	74.3	30
7	6872	M/R LIVESTOCK	AMHERST, SD	M/RS DREAMER 19G	WLE UNO MAS X549	3/23/19	12.4	45	59	75	78	90	5.5	70	48	85	10.8	90	-0.53	1	0.27	55	126.9	45	72.0	40
scr	6870	BUCK CREEK RANCH	PAWNEE, OK	B C R BLACKSTAR 086G	HPF QUANTUM LEAP Z952	3/20/19	13.4	30	66	50	94	65	4.9	75	54	55	14.2	65	-0.36	20	0.14	80	117.5	65	66.4	65
scr	6867	B&K FARMS	PETERSBURG, TN	IVS/B&K HALLELUJAH ALLEY 305G	MR CCF 20-20	3/17/19	13.4	30	71	25	107	35	6.7	45	54	55	13.5	70	-0.42	10	0.14	80	120.1	60	70.6	45
6	6866	BEAU PEINE	HASTINGS, MN	PURFEERST ELVIRA 951	MR HOC BROKER	3/11/19	8.1	90	61	65	88	75	4.1	85	44	95	10.7	90	-0.15	80	0.14	80	98.7	95	59.8	90
2	6865	HIGHLAND ACRES	STARBUCK, MN	HA GABRIELLE 916G	SC PAY THE PRICE C11	3/11/19	14.0	25	74	20	115	20	8.3	20	60	20	11.8	85	-0.23	55	0.17	75	118.0	65	71.8	40
scr	6856	SARA SULLIVAN	DUNLAP, IA	JSUL GLAMOUR GIRL 970G	PROFIT	3/7/19	8.4	90	54	85	77	90	4.3	85	46	90	11.6	85	-0.19	65	0.28	55	106.6	85	60.4	90
4	6861	DELANEY CHESTER	OREGONIA, OH	H2OS/FSCI MISS STYLE G10	SILVEIRAS STYLE 9303	3/5/19	7.3	95	53	90	80	90	3.5	90	42	99	14.5	65	-0.17	75	0.29	50	112.4	75	60.0	90

<b>Champion Spring Heifer Calf</b>	<u>6981</u>
<b>Reserve Champion Spring Heifer Calf</b>	<u>6876</u>

							EPD Averages				11.7		65		99		6.3		54		15.4		-0.23		0.28		123.8		69.2		
Place	Tag	Exhibitor	Hometown	Animal Name	Sire	DOB	CE	%	WW	%	YW	%	MCE	%	MWW	%	Stay	%	YG	%	MB	%	\$API	%	\$TI	%	GE				

**Class 502: Junior Heifer Calves, Born January - February 2019**

**Subclass A**

5	6930	TRENNEPOHL FARMS & CAMRYN CLAPP	MIDDLETOWN, IN	STCC SERENAS PRINCESS 9012	CIRCLE M TEJAS	2/27/19	10.6	70	64	55	94	65	5.1	75	55	50	18.4	20	-0.23	55	0.32	45	130.3	40	68.7	55	
4	6929	MACKENZIE NEAL	W ALEXANDRIA, OH	JSUL TRADITION OF DREAMS 9210G	SCC TRADITION OF 24	2/26/19	7.9	90	62	65	94	65	3.1	95	51	70	9.4	95	-0.16	75	0.22	65	102.6	90	64.0	75	
scr	6926	BRYCE LEEFERS	EDGERTON, MO	SFI MISS J-LO G3C	W/C LOADED UP 1119Y	2/22/19	11.0	65	64	55	98	55	6.0	60	55	45	17.4	30	-0.43	10	0.03	95	114.9	70	63.0	80	
scr	6923	RUST MOUNTAIN VIEW RANCH	MERCER, ND	RUST MS NIGHT ROSE 929G	W/C NIGHT WATCH 84E	2/20/19	16.1	10	63	55	90	70	6.7	45	51	70	18.5	20	-0.20	65	0.49	20	153.5	4	77.5	15	GE
8	6921	MARTHA MOENNING	HAYFIELD, MN	PEINE/GS FANTASY 902G	W/C RELENTLESS 32C	2/20/19	11.7	55	59	75	80	85	5.1	75	46	90	10.8	90	-0.35	20	0.15	80	105.8	90	61.9	85	
2	6919	WILL ADCOCK	BARTLESVILLE, OK	HARA'S SULL PRINCESS 9238G	FHEN HALFTIME A127	2/9/19	11.6	55	62	65	92	65	6.0	60	49	80	9.2	95	-0.18	70	0.22	65	106.7	85	64.4	75	
6	6917	FERGUSON SHOW CATTLE	CHARDON, OH	FSCI MS ERICA G178	PROFIT	2/9/19	6.5	99	59	75	86	80	4.4	85	52	65	10.9	90	-0.12	85	0.31	45	105.6	90	63.5	80	
7	6915	TRENNEPOHL FARMS & CLAIRE TRENNEPOHL	MIDDLETOWN, IN	STCC SERENAS QUEEN 9011	CIRCLE M TEJAS	2/8/19	10.6	70	64	55	94	65	5.1	75	55	50	18.4	20	-0.23	55	0.32	45	130.3	40	68.7	55	
3	6913	JS SIMMENTAL	MAXWELL, IA	BTYL HALSEY 203G	MR HOC BROKER	2/5/19	10.0	75	55	85	76	90	4.7	80	39	99	7.7	99	-0.25	50	0.04	95	88.7	99	55.2	99	
1	6894	JOSIE PHILLIPS & BUCK CREEK RANCH	MAYSVILLE, KY	RP/BCR BUILT TO LOVE G303	PVF INSIGHT 0129	2/3/19	11.2	60	66	45	102	45	5.1	75	53	60	10.4	90	-0.20	65	0.20	70	112.8	75	68.6	55	

**Subclass B**

4	6845	TRENNEPOHL FARMS & RICHARD JENKINS	MIDDLETOWN, IN	SVJ DAISY MAE G8A	LLSF PAYS TO BELIEVE ZU194	1/24/19	11.7	55	69	35	105	40	6.7	45	54	55	7.5	99	-0.23	55	0.16	75	114.4	75	72.7	35	
6	6907	ELMORE CATTLE SVCS & VALHALLA CATTLE CO	WAUKOMIS, OK	FLY GENEVIEVE 2298G	HOOK'S BROADWAY 11B	1/23/19	3.6	99	71	30	107	35	2.4	99	58	30	14.5	65	-0.35	20	0.11	85	113.4	75	69.6	50	
3	6906	CHAELE ROBERTS	ABSAROKEE, MT	DMCC GALA 115G	REMYNGTONSECRETWEAPON185	1/20/19	15.4	15	56	85	78	90	7.3	35	46	90	12.0	85	-0.29	35	0.03	95	108.3	85	59.7	90	
1	6904	MORGAN JACKSON & RED RIVER FARMS	KAUFMAN, TX	RRF RITA 215G	OBCC CMFM DEPLORABULL D148	1/17/19	14.2	25	66	45	102	45	7.9	25	58	30	12.2	80	-0.29	35	0.28	55	125.5	50	72.4	40	
2	6900	HANNAH TOPMILLER	PLEASANT PLAIN, OH	TJSC LILLY 19G	SILVEIRAS STYLE 9303	1/7/19	11.6	55	58	80	86	80	6.4	50	43	95	13.7	70	-0.19	65	0.19	70	114.3	75	62.0	85	
5	6897	FERGUSON SHOW CATTLE	MENTOR, OH	FSCI MS GIA G108	CDI INNOVATOR 325D	1/3/19	11.2	60	76	15	117	15	6.2	55	63	10	14.1	65	-0.29	35	0.27	55	128.5	40	77.3	20	
scr	6910	BIG BEAR CATTLE CO	STERLING, KS	HAUGE ELBA 01G	MR HOC BROKER	1/3/19	10.0	75	66	50	96	60	5.7	65	50	75	12.0	85	-0.16	75	0.26	60	113.3	75	66.9	65	

**Champion Junior Heifer Calf** 6904  
**Reserve Champion Junior Heifer Calf** 6900

							EPD Averages					11.7		65		99		6.3		54		15.4		-0.23		0.28		123.8		69.2		
Place	Tag	Exhibitor	Hometown	Animal Name	Sire	DOB	CE	%	WW	%	YW	%	MCE	%	MWW	%	Stay	%	YG	%	MB	%	\$API	%	\$TI	%	GE					

**Class 503: Fall Heifer Calves, Born September - December 2018**

4	6940	TRENNEPOHL FARMS & KATHERINE NEMCOVIC	MIDDLETOWN, IN	STCC SENORITA 8197	CIRCLE M TEJAS	11/10/18	10.6	70	64	55	94	65	5.1	75	55	50	18.4	20	-0.23	55	0.32	45	130.3	40	68.7	55
scr	6788	LEE'S CATTLE COMPANY	BRUSH, CO	LEES DIXIE ERICA 8981	HILB MAVERICK A43	11/5/18	9.8	75	54	90	80	90	5.1	75	45	95	9.1	95	-0.20	65	0.26	60	104.4	90	61.0	85
2	6939	WILL NEAL	OSGOOD, IN	S&S SHE'S SO CLASSY 8802F	EXAR CLASSEN 1422B	11/3/18	4.6	99	68	40	100	50	2.7	95	51	70	11.3	85	-0.17	75	0.36	40	109.3	80	68.2	55
7	6938	TRIPLE D CATTLE CO	HOLSTEIN, NE	JSUL MARY'S BIS 8378F	S A V BISMARCK 5682	10/19/18	12.5	45	59	75	90	70	6.8	45	52	70	14.7	60	-0.17	75	0.20	70	121.7	55	65.9	70
3	6937	CLINT MAIN	SEYMOUR, IN	JSUL GLAMOUR PROFIT 8408F	PROFIT	10/16/18	8.2	90	54	85	77	90	4.3	85	46	90	11.6	85	-0.19	65	0.28	55	106.2	85	60.2	90
scr	6936	BLAKE WILKINS	BENNETT, IA	MISS BANKROLL 50F	W/C BANKROLL 811D	10/14/18	14.1	25	60	70	87	75	7.4	35	52	65	10.8	90	-0.20	65	0.30	50	120.0	60	68.4	55
5	6935	SADIE ROBISON	CUSHING, OK	HSC FF FRESCOS F811	JSSC WIDE BODY 090W	9/28/18	12.9	40	67	45	99	50	9.5	10	56	40	14.7	60	-0.13	85	0.22	65	122.9	55	68.8	55
1	6933	SARA SULLIVAN	DUNLAP, IA	JSUL REBA'S FANCY 8375F	FHEN HALFTIME A127	9/9/18	12.7	40	54	90	81	85	7.7	30	48	80	13.3	75	-0.16	75	0.33	45	122.6	55	64.7	75
6	6932	MAKENZIE DeBERRY	OLTON, TX	JCBB LADY F8605	DMCC COUNTER ATTACK 8C	9/6/18	9.9	75	68	35	102	45	4.5	80	53	60	11.4	85	-0.23	55	0.21	70	111.1	80	67.9	60

<b>Champion Fall Heifer Calf</b>	6933
<b>Reserve Champion Fall Heifer Calf</b>	6939

**Class 504: Intermediate Heifers, Born May - August 2018**

1	6946	MEGAN BROWN	ROANOKE, AL	3BCC LUCY	MR HOC BROKER	7/3/18	8.6	90	60	70	90	70	3.9	90	51	70	10.4	90	-0.16	75	-0.06	99	89.3	99	55.9	99
scr	6944	LASHMETT CATTLE	WINCHESTER, IL	UDE PRINCESS 153F	TLLC ONE EYED JACK	5/5/18	9.5	80	53	90	74	95	1.8	99	38	99	8.9	95	-0.33	25	0.06	90	92.3	99	55.1	99
2	6943	PAIGE PEINE	HASTINGS, MN	PEINE/GS BETH 829F	W/C RELENTLESS 32C	5/4/18	10.6	70	81	4	114	20	5.4	70	60	20	14.1	65	-0.31	30	0.20	70	118.7	65	74.0	30

<b>Champion Intermediate Heifer</b>	6946
<b>Reserve Champion Intermediate Heifer</b>	6943

**Class 505: Spring Yearling Heifers, Born January - April 2018**

**Subclass A**

scr	6972	BROOKLYN CURTIN	OXFORD, IA	RJ PF RITA 8129F	W/C RELENTLESS 32C	4/26/18	8.9	85	74	20	109	30	3.5	90	56	45	11.2	90	-0.19	65	0.43	25	121.7	55	75.4	25
1	6949	JUSTIN PFANNEBECKER	LASALLE, CO	CLAC WHISPER 688F	COLBURN PRIMO 5153	4/21/18	11.8	50	60	70	86	80	8.0	25	49	80	11.5	85	-0.14	80	0.33	45	112.3	75	64.8	75
3	6973	MADISON KAY LOSCHKE	KINGSDOWN, KS	J6RA DORIS TINGE 800	KMJ REVENUE	4/18/18	11.3	60	57	80	87	75	7.6	30	55	50	10.9	90	-0.21	60	0.14	80	104.8	90	61.1	85
scr	2152	LOGAN LAKIN	SARCOXIE, MO	HR/PCC KATE 810F	KRMS PRIMARY CANDIDATE	4/3/18	8.1	90	58	80	85	80	2.9	95	52	65	12.4	80	-0.30	35	0.06	90	100.3	95	59.4	90
2	6967	WHITNEY OLSON	ALEXANDRIA, MN	FIJI 843F	S A V BRILLIANCE 8077	3/26/18	12.8	40	62	65	95	60	5.8	65	54	55	11.0	90	-0.17	75	0.13	80	110.5	80	64.9	70
4	6963	TRENNEPOHL FARMS / J&L RUSSELL	MIDDLETOWN, IN	LAW MS RELENTLESS LIGHT	W/C RELENTLESS 32C	3/18/18	8.9	85	67	45	93	65	3.9	90	55	50	12.4	80	-0.31	30	0.19	70	108.4	85	65.8	70
5	6948	LAUREN BAYER	ALBIA, IA	MINN FERGIE 31F	PROFIT	3/18/18	8.4	90	55	85	78	90	4.1	85	48	85	10.3	90	-0.19	65	0.25	60	103.0	90	60.4	90

**Subclass B**

scr	6895	KATHY LEHMAN	SHELBY, OH	JBOY TAMMY 843	MR HOC BROKER	2/10/18	8.2	90	56	85	80	85	4.4	85	46	90	8.2	99	-0.12	85	0.23	65	98.9	95	60.7	85
3	6956	WYATT DeBERRY	OLTON, TX	LEES DIXIE ERICA 8003	W/C BULLSEYE 3046A	2/3/18	11.7	55	54	90	85	80	4.5	80	50	75	15.6	50	-0.27	40	0.29	50	126.8	45	65.9	70
2	6975	SARA SULLIVAN	DUNLAP, IA	JSUL DREAM BIG 8992F	SILVEIRAS STYLE 9303	1/17/18	11.5	55	56	85	82	85	6.4	50	44	95	12.2	80	-0.14	80	0.32	45	117.0	70	63.9	75
1	6950	JOSIE PHILLIPS	MAYSVILLE, KY	ROCKING P VALENTINE F014	CNS PAYS TO DREAM T759	1/8/18	11.0	65	59	75	92	65	7.2	35	49	80	10.1	95	-0.34	25	0.11	85	113.5	75	65.9	70

<b>Champion Yearling Heifer</b>	6950
<b>Reserve Champion Yearling Heifer</b>	6949

<b>GRAND CHAMPION PERCENTAGE HEIFER</b>	6950
<b>RESERVE GRAND CHAMPION PERCENTAGE HEIFER</b>	6933

**PREMIER BREEDER** Trennepohl Farms - Middletown, IN  
**PREMIER EXHIBITOR** Trennepohl Farms - Middletown, IN



- SEVEN GENERATIONS STRONG -

# SINCE 1822

SAME FARM. SAME COMMITMENT.



JOIN US FOR OUR ANNUAL  
PRODUCTION SALE  
**02.22.20**



**HICKS CATTLE CO.**  
[WWW.THEDIAMONDH.COM](http://WWW.THEDIAMONDH.COM)

STEVE, KRISTEN,  
JETT & WAYLON HICKS  
STEVE : 217-799-1105